

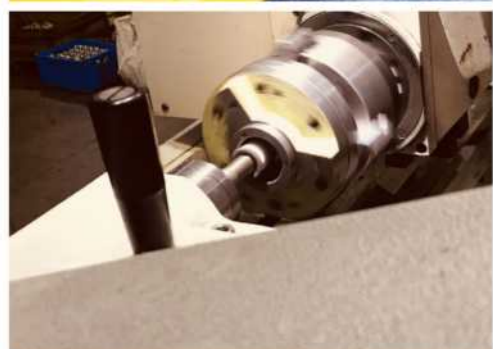


terylair[®]
www.terylair.com

AIR MOTORS

 ATEX Approved

Terycar Air Motors



Terycar manufactures a growing range of pneumatic equipment and tools. The equipment boasts of cutting edge features, comparable with the world's best technologies. Terycar equipment competes successfully against industry leading brands, feature for feature. Terycar pneumatic vane motors are manufactured under a robust ISO 9001:2015 QA system. The production facility is state of the art and the motors produced have a CE approval and Ex Certification.

Every pneumatic vane motor is thoroughly tested on a test bench for horsepower, speed and torque. We promise unrivalled product reliability. Spares are readily available at the distributor level and at our factory warehouse.

Terycar pneumatic vane motor start from 0.8 KW (1.07HP) and go upto 7.1KW (9.5HP) All motors can be ordered in Lube free versions for clean room environments.

Vane Motor Features & Advantages

- Vane motors are self-cooling and therefore run cool and can be operated continuously.
- They can be configured for high rotational speeds.
- They can be stalled without damage to components, when stalled there is no consumption of energy.
- Compact size compared to electrical motors.
- No decline in motor efficiency over time, bearings & vanes are replaceable to restore motors efficiency.
- No damage from overloading.
- Speed and torque can be variable by simple modulation of input air pressure and air volume.
- Easily and rapidly and repeatedly reversible.
- Easy maintenance & repair with low cost compared to electrical motors.
- Lightweight, cool running, stall resistance and explosion proof.
- Availability with mounting flexibility & full warranty.

Terycar Air Motors

Vane Motors Application

Terycar Vane Motors versatile workhorses that can be used in a diverse range of situations across numerous industries. Some of the typical products application industry-wise are.

Construction & Machinery
Concrete vibrators / Hose & Cable Feeders / Pipe Cutting & Threading.

General Machinery
Multiple uses such as power-driven tumblers, Barrels, Indexing tables, Paint finishing equipment.

Environmental
Air Ventilation & Ducting Fans.

Valve Operating
Actuation of Valves.

Lifting Applications
Mucking Winches, Pneumatic Chain Hoist.

Conveyors
Material Handling & Automatic Material Movement through the driver chain. Safe use in Hazardous Atmosphere in Chemical Industries.

Lubricated or Lube-free ?

The Lubricated series of vane motors are suitable for general applications. See the Code explanations on page six. Standard motors can take a maximum inlet air pressure of 7Kg/cm² (7 bar) and like any other pneumatic machinery, needs a lubricator fitted online. Lubricated motors offer the most economical solution.

Applications where the working environment around the motor is sensitive to pollution, exhaust traces of oil mist are not allowable, need lube-free motors. These motors can operate totally without lubrication and do not exhaust any contaminants into the atmosphere. They are ideal for applications which need such clean environments such as food and pharma processing. Lube-free motors operate at a max pressure of 5.6kg/cm² (5 bar)

Both Lubricated and lube-free motors are ATEX Certified by default. They have an Ex code of Ex II 2GD Ex h IIC T6 Gb & Ex II 2GD Ex h IIC T4 Gb.

All terycar motors are CE certified as meeting European Directives: (2006/42/EC) Machinery Safety and Harmonized standards..



Filter Regulator Lubricator



Motor Size	Line Size, Port Connection	Filter, Regulator, Lubricator Part No	Filter Part No	Regulator Part No	Lubricator Part No
1 VM	1/8"	FRL 3	F 3	R 3	L 3
2 VM	3/8"	FRL 9	F 9	R 9	L 9
4 VM	1/2"	FRL 12	F 12	R 12	L 12
6 VM	1/2"	FRL 12	F 12	R 12	L 12
8 VM	1"	FRL 25	F 25	R 25	L 25
16 VM	1-1/4"	FRL 32	F 32	R 32	L 32

Repair Kits

Motor Size	Part No
1 VM	8119701
2 VM	8039701
4 VM	8049701
6 VM	8059701
8 VM	8039701
16 VM	8109701

Service references

Motor Size	Maintenance Manual No, Rev
1 VM	MM-377 R00
2 VM	MM-368 R00
4 VM	MM-369 R00
6 VM	MM-370 R00
8 VM	MM-371 R00
16 VM	MM-372 R00



Air Motor Nomenclature

X	XX	X	X	X	X
Size	Motor Type	Mounting	Lubricated or Lube-Free	Material of Construction	Threading on Inlet and Outlet
1		L - Face Type			
2	VM - Vane Type	S- Foot Type	A- Lubricated	L - SG Iron	R- NPT
4	PM - Piston Type	T - Hub		S - SS316	G - BSPT
6	VG - Vane Geared	D - IEC Flange Type	O - Lube Free		
8	PG - Piston Geared	N - NEMA Flange Type			
16					

For example, 1VMTALR is a size 1, Vane type, Hub Mounted, Lubricated, SG Iron MOC with NPT threading



Explosion Proof

All Terryair air motors are ATEX approved and safe for use in explosive atmospheres
Ex Codes
Ex IIGD Ex IIC T6 Gb
Ex IIGD Ex h IIIC T85degC Db



Approvals and Certifications

All Terryair air motors are CE marked and manufactured under an ISO 9001:2015 Quality system - SGS.



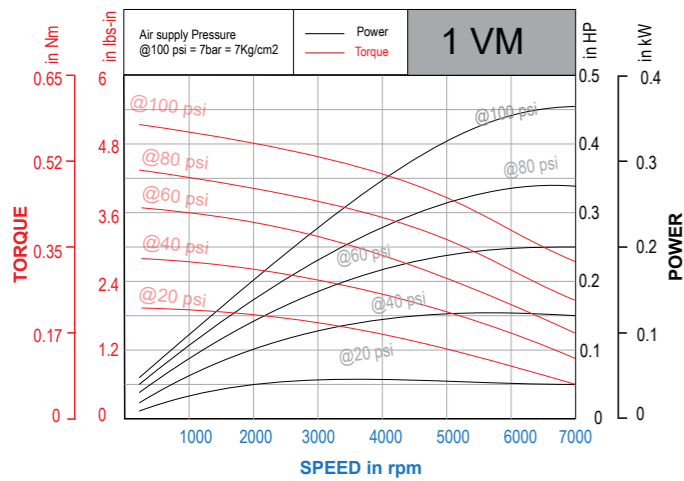
Added Features

Cool Running
Variable Speeds
Load to Stall
Instantly Reversible
available as Lube free
available with SS construction
available with SS + Lube Free

1VM AIR MOTOR

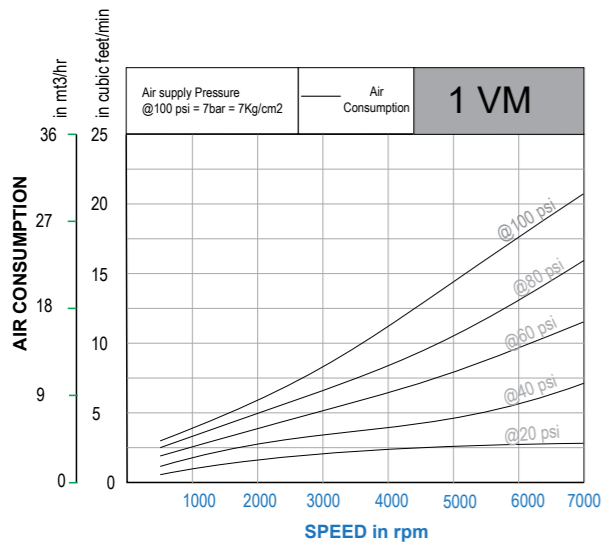


Power and Torque Graphs 1VM



1VM Air Motor rear view

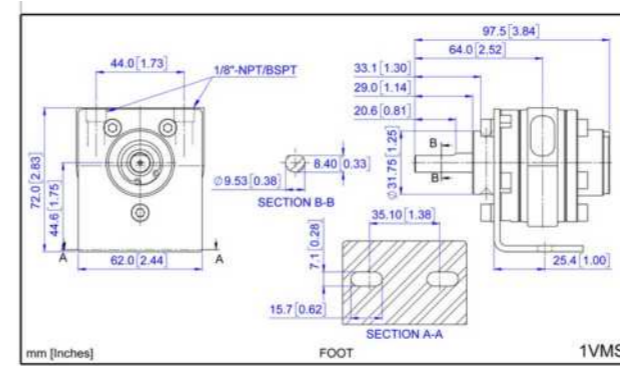
Air Consumption Graph 1VM



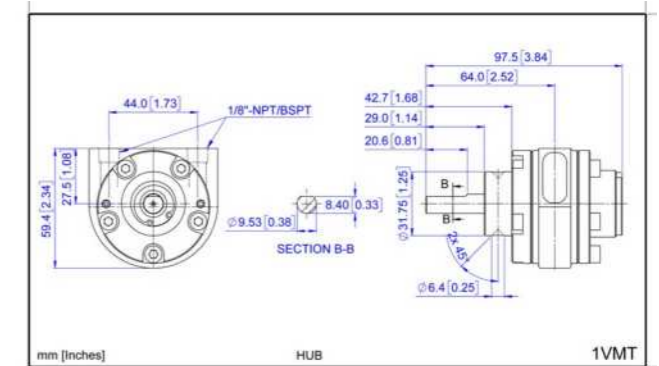
Technical Data 1 VM

Power	upto 0.35kW (0.45HP)
Torque	upto 0.55 Nm (5 lbs-in)
Air Consumption	0 to 30m3/hr (0 to 22 cfm)
Motor Weight	0.9kgs (2lbs)
Operating Pressure	1.4 to 7kg/cm2 (20 to 100PSI)
Max Allowable speed	7000 rpm (ATEX limit)*
REPAIR KIT for 1VM	Kit No 8119701 (Common for all variants, includes Blades, Bearings, Shims, Blade springs, Oil Seals and O rings)

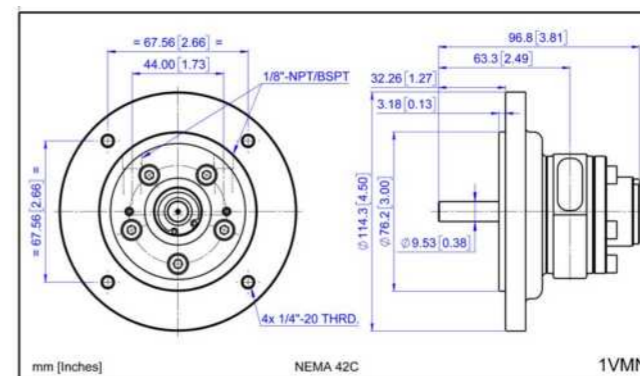
Foot Mounting 1VM



Hub Mounting 1VM

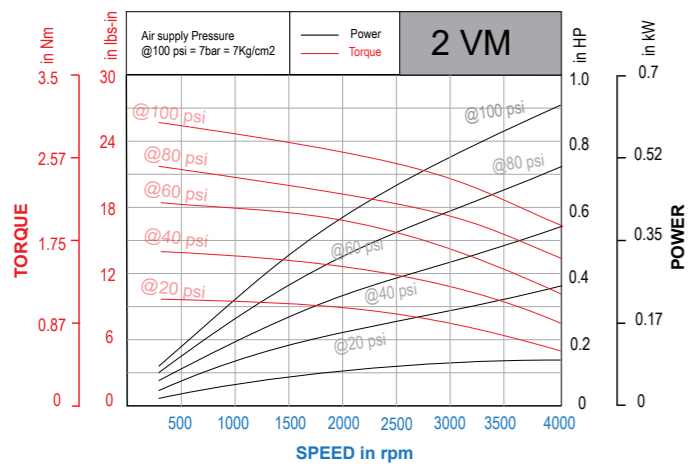


NEMA Flange Mounting 1VM



2VM AIR MOTOR

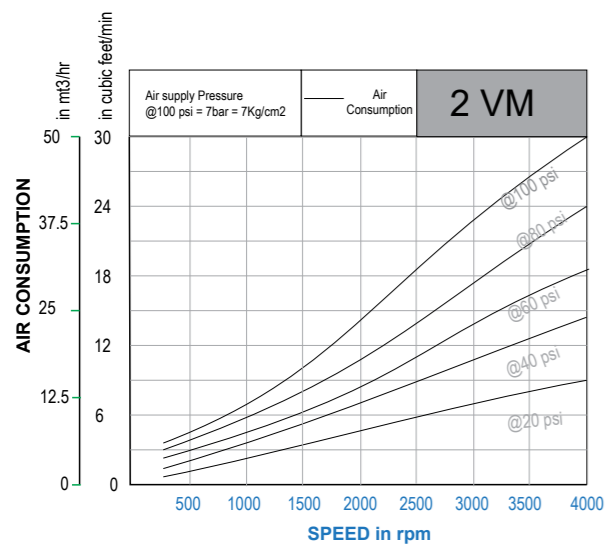
Power and Torque Graphs 2VM



2VM Air Motor rear view



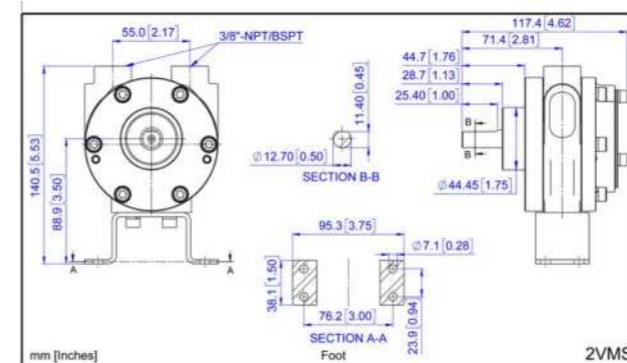
Air Consumption Graph 2VM



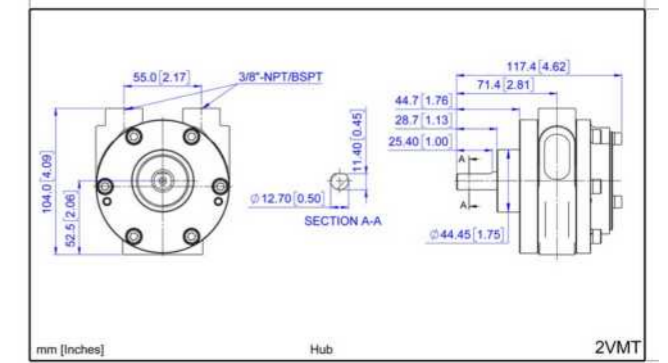
Technical Data 2VM

Power	upto 0.7kW (0.9HP)
Torque	upto 2 Nm (19 lbs-in)
Air Consumption	0 to 50 m3/hr (0 to 30 cfm)
Motor Weight	3.25 kgs (7.15 lbs)
Operating Pressure	1.4 to 7kg/cm2 (20 to 100PSI)
Max Allowable speed	4000 rpm (ATEX limit)
REPAIR KIT for 2VM Hub/Foot	Kit No 8039701 (includes Blades, Bearings, Shims, Blade springs, Oil Seals and O rings)
REPAIR KIT for 2VM IEC/NEMA	Kit No 8039702 (includes Blades, Bearings, Shims, Blade springs, Oil Seals and O rings)

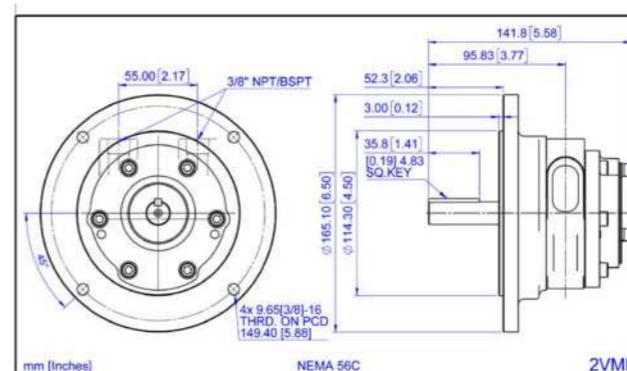
Foot Mounting 2VM



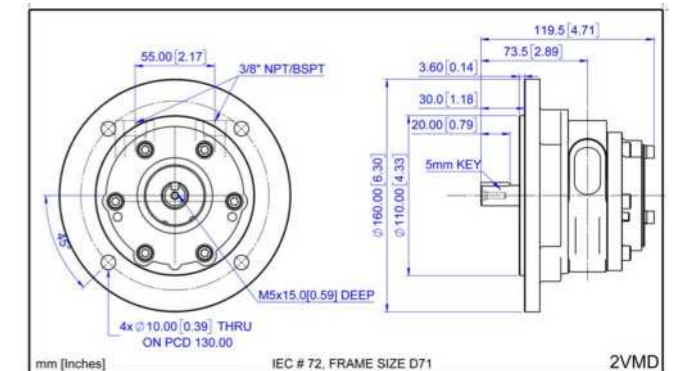
Hub Mounting 2VM



NEMA Flange Mounting 2VM

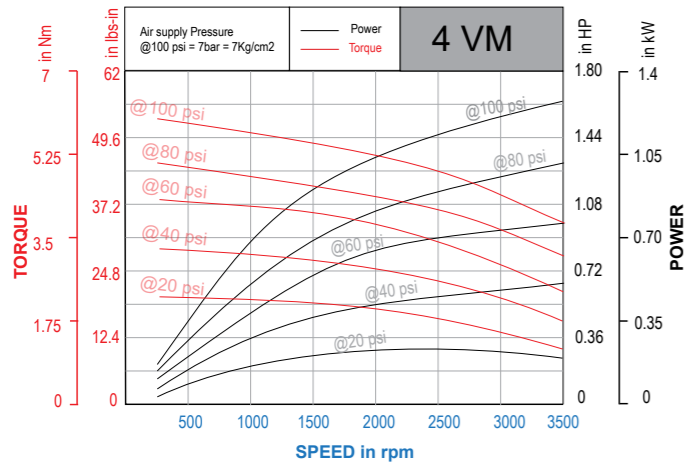


IEC Flange Mounting 2VM



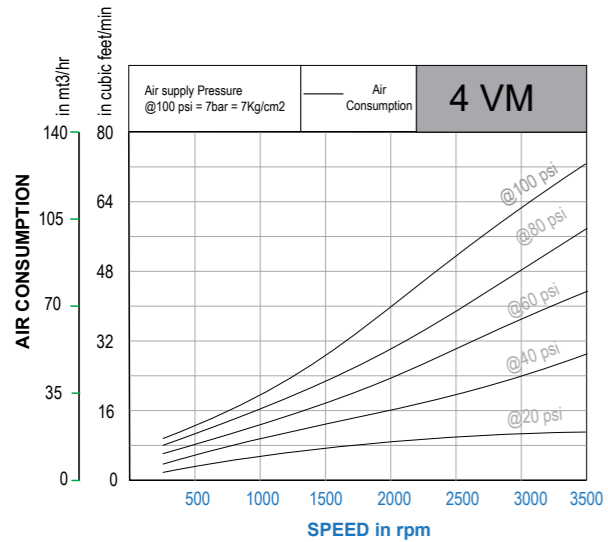
4VM AIR MOTOR

Power and Torque Graphs 4VM



4VM Air Motor rear view

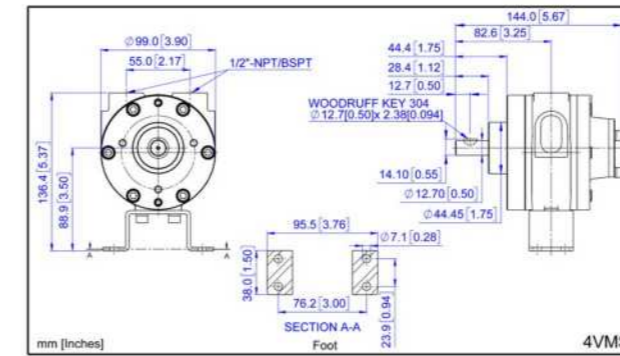
Air Consumption Graph 4VM



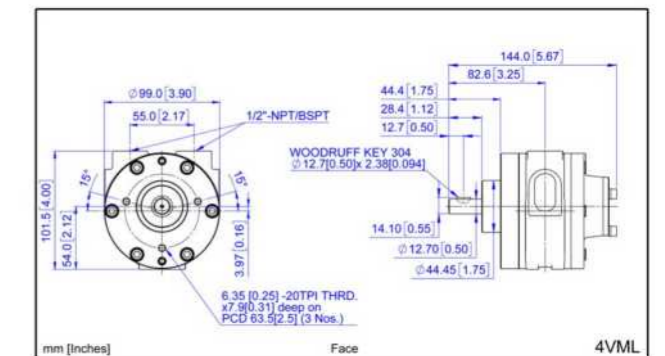
Technical Data 4VM

Power	upto 1.25 kW (6.7 HP)
Torque	upto 4 Nm (35 lbs-in)
Air Consumption	0 to 120 m3/hr (0 to 72 cfm)
Motor Weight	3.8 kgs (8.3 lbs)
Operating Pressure	1.4 to 7kg/cm2 (20 to 100PSI)
Max Allowable speed	3500 rpm (ATEX limit)
REPAIR KIT for 4VM Face/Foot	Kit No 8049701 (includes Blades, Bearings, Shims, Blade springs, Oil Seals and O rings)
REPAIR KIT for 4VM IEC/NEMA	Kit No 8049701 (includes Blades, Bearings, Shims, Blade springs, Oil Seals and O rings)

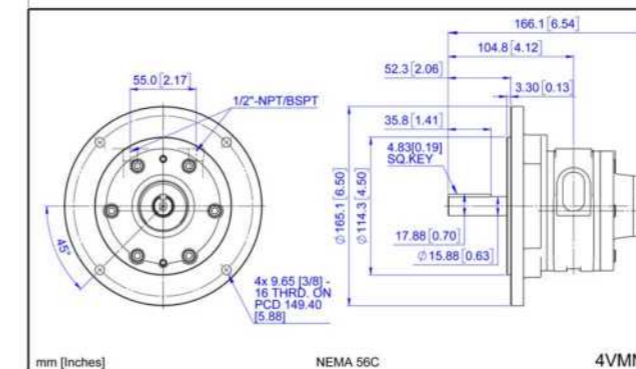
Foot Mounting 4VM



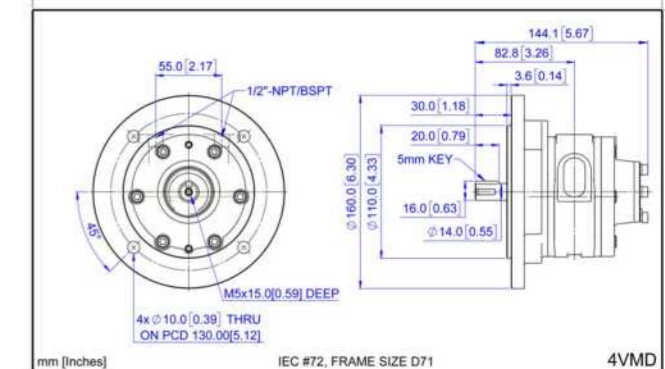
Face Mounting 4VM



NEMA Flange Mounting 4VM

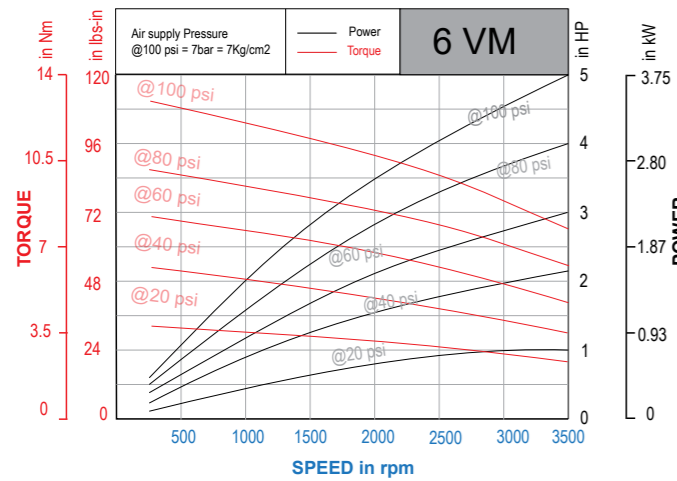


IEC Flange Mounting 4VM



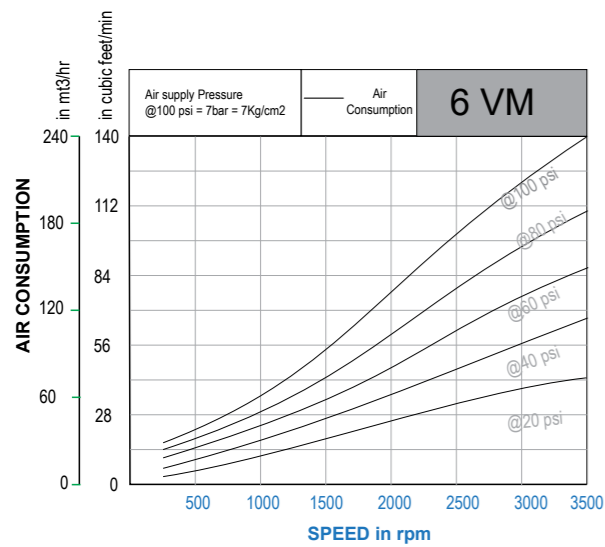
6VM AIR MOTOR

Power and Torque Graphs 6VM



6VM Air Motor rear view

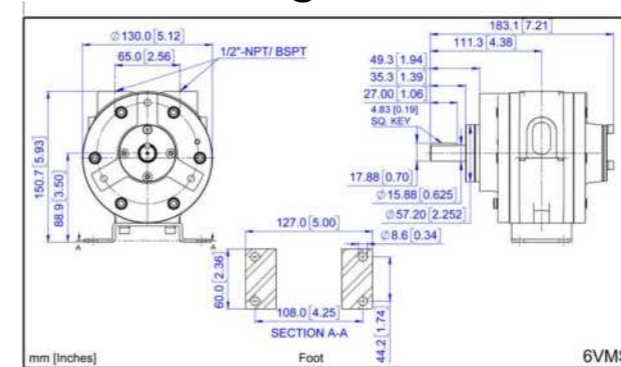
Air Consumption Graph 6VM



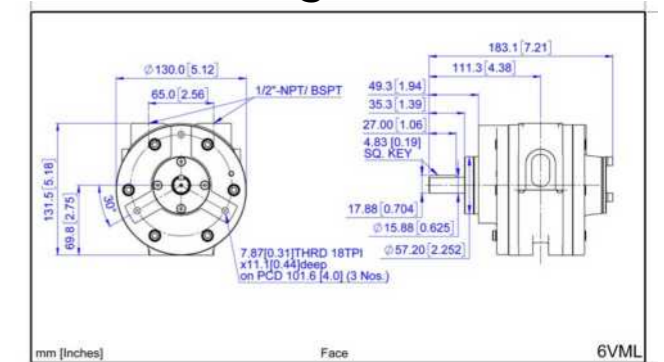
Technical Data 6VM

Power	upto 3 kW (4 HP)
Torque	upto 12 Nm (105 lbs-in)
Air Consumption	0 to 240 m3/hr (0 to 140 cfm)
Motor Weight	7.5 kgs (16.5 lbs)
Operating Pressure	1.4 to 7kg/cm2 (20 to 100PSI)
Max Allowable speed	3500 rpm (ATEX limit)
REPAIR KIT for 6VM Face/Foot	Kit No 8059701 (includes Blades, Bearings, Shims, Blade springs, Oil Seals and O rings)
REPAIR KIT for 6VM IEC/NEMA	Kit No 8059701 (includes Blades, Bearings, Shims, Blade springs, Oil Seals and O rings)

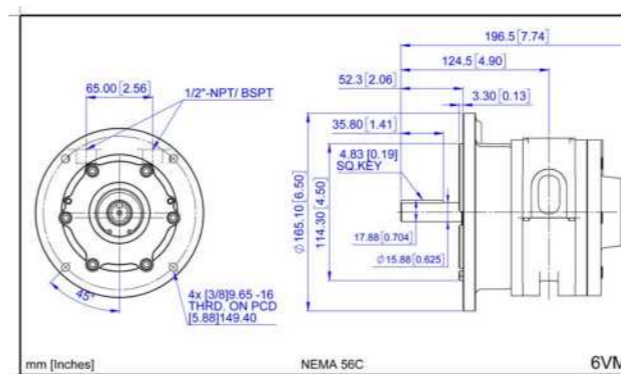
Foot Mounting 6VM



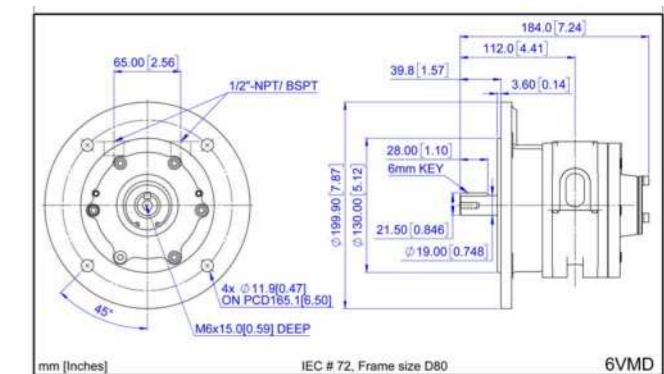
Face Mounting 6VM



NEMA Flange Mounting 6VM

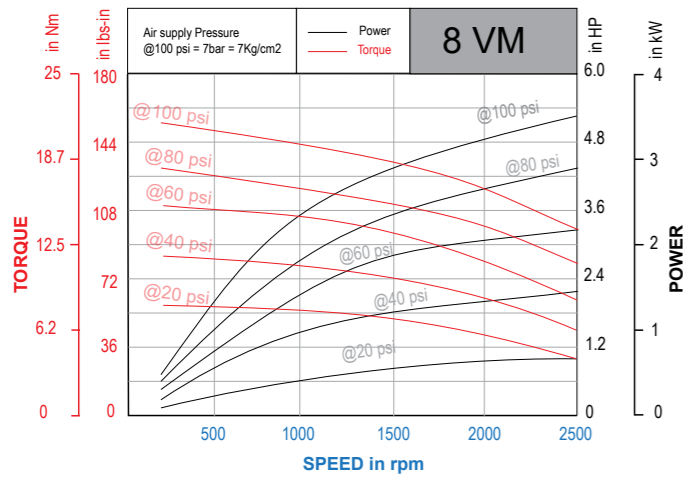


IEC Flange Mounting 6VM

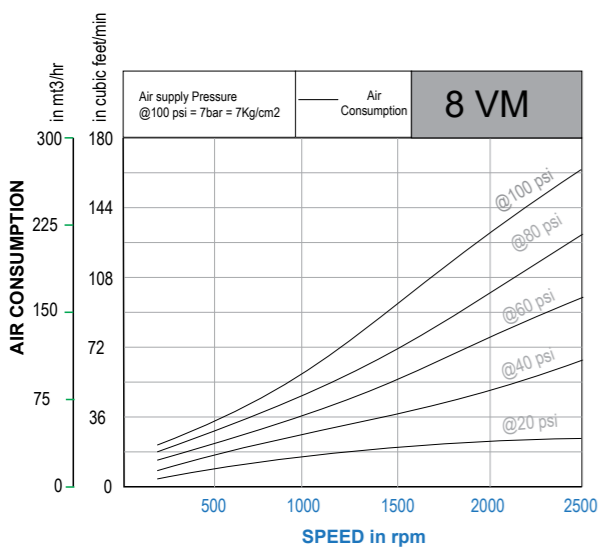


8VM AIR MOTOR

Power and Torque Graphs 8VM



Air Consumption Graph 8VM



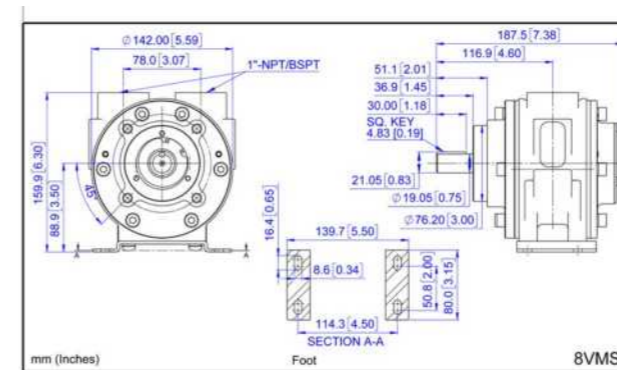
8VM Air Motor rear view



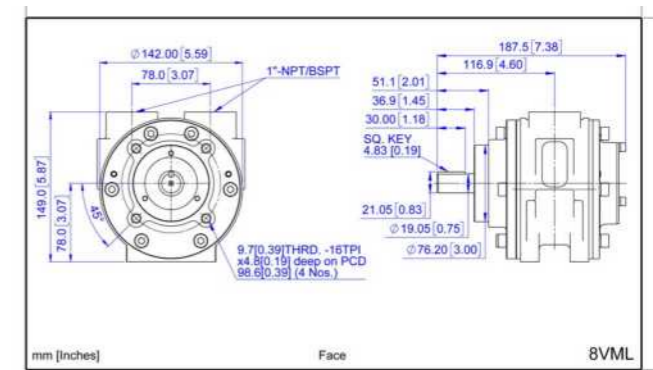
Technical Data 8VM

Power	upto 4kW (5 HP)
Torque	upto 15 Nm (130 lbs-in)
Air Consumption	0 to 300 m3/hr (0 to 175 cfm)
Motor Weight	11 kgs (24.2 lbs)
Operating Pressure	1.4 to 7kg/cm2 (20 to 100PSI)
Max Allowable speed	2500 rpm (ATEX limit)
REPAIR KIT for 8VM	Kit No 8069701 (includes Blades, Bearings, Shims, Blade springs, Oil Seals and O rings)

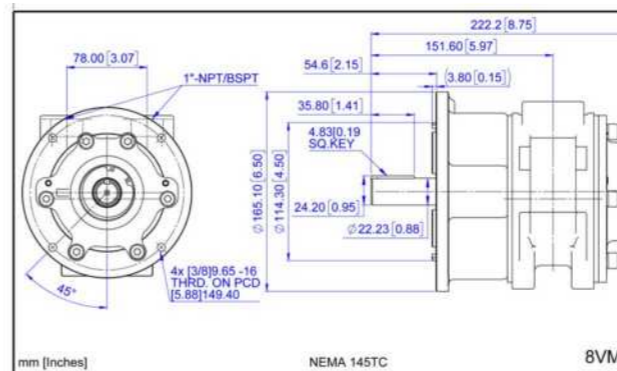
Foot Mounting 8VM



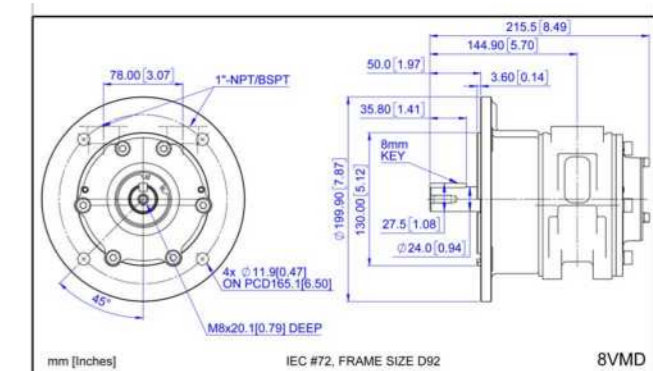
Face Mounting 8VM



NEMA Flange Mounting 8VM

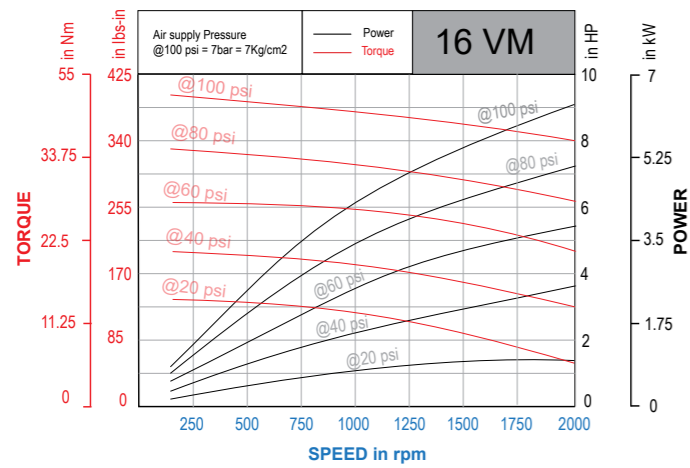


IEC Flange Mounting 8VM



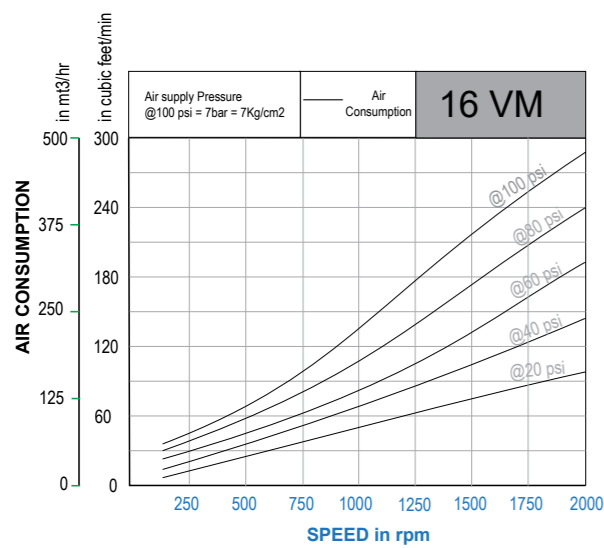
16VM AIR MOTOR

Power and Torque Graphs 16VM



16VM Air Motor rear view

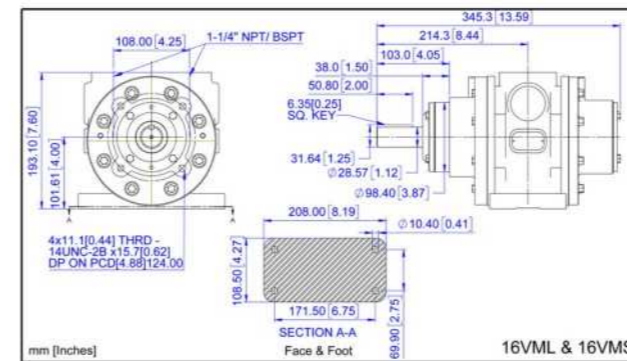
Air Consumption Graph 16VM



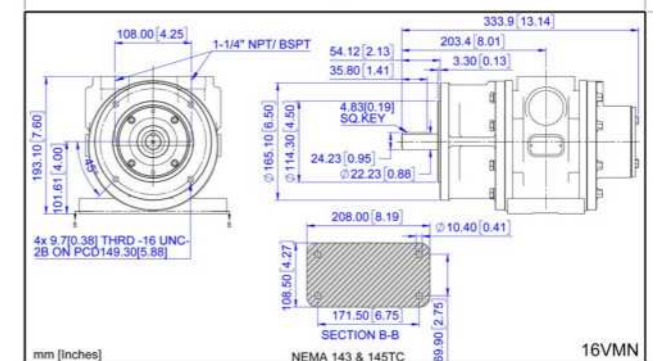
Technical Data 16VM

Power	upto 7 kW (9.5 HP)
Torque	upto 35 Nm (294 lbs-in)
Air Consumption	0 to 470 m3/hr (0 to 270 cfm)
Motor Weight	32 kgs (70 lbs)
Operating Pressure	1.4 to 7kg/cm2 (20 to 100PSI)
Max Allowable speed	2000s rpm (ATEX limit)
REPAIR KIT for 16VM	8109701 Common for all variants, includes Blades, Bearings, Shims, Blade springs, Oil Seals and O rings

Face and Foot Mounting 16VM



NEMA Flange Mounting 16VM





Teryair Equipment Pvt. Ltd.

Factory
A1, Tirupathi Udyog Nagar
Sativali Road, Vasai East
Palghar 401208, Maharashtra
INDIA

Sales
C609, ONEBKC
BKC, Bandra East, Mumbai
400051, Maharashtra
INDIA

email : info@teryair.com
Tel : +91 88790 32775
Tel : +91 86696 10364
web : www.teryair.com

